



iTriangle

Infotech Pvt Ltd

innovate • optimise • deliver

innovate • optimise • deliver

GPS-GSM Based Generator Tracking & Monitoring System with RFID Solution Model S101

Executive Summary

- ❖ **A Bangalore, India,** based Company.
- ❖ Commenced operations in February 2009.
- ❖ Engaged in Design and Development in the domains of GPS,GIS, Mobile Applications, RFID, Web Based Enterprise Applications.
- ❖ Manufacturing and Quality Assurance.
- ❖ A Full Fledged R & D wing with a dedicated team of qualified professionals.



OUR VISION

To be a vibrant company, providing quality and efficient service to customers and a rewarding experience to its employees.

OUR MISSION

We will develop products and provide services that will have a Strong Social Impact and would improve the quality of Human Life. From a business perspective, our products/services will help our clients get a better control over their business and make a positive impact to their bottom-line. .

INNOVATION

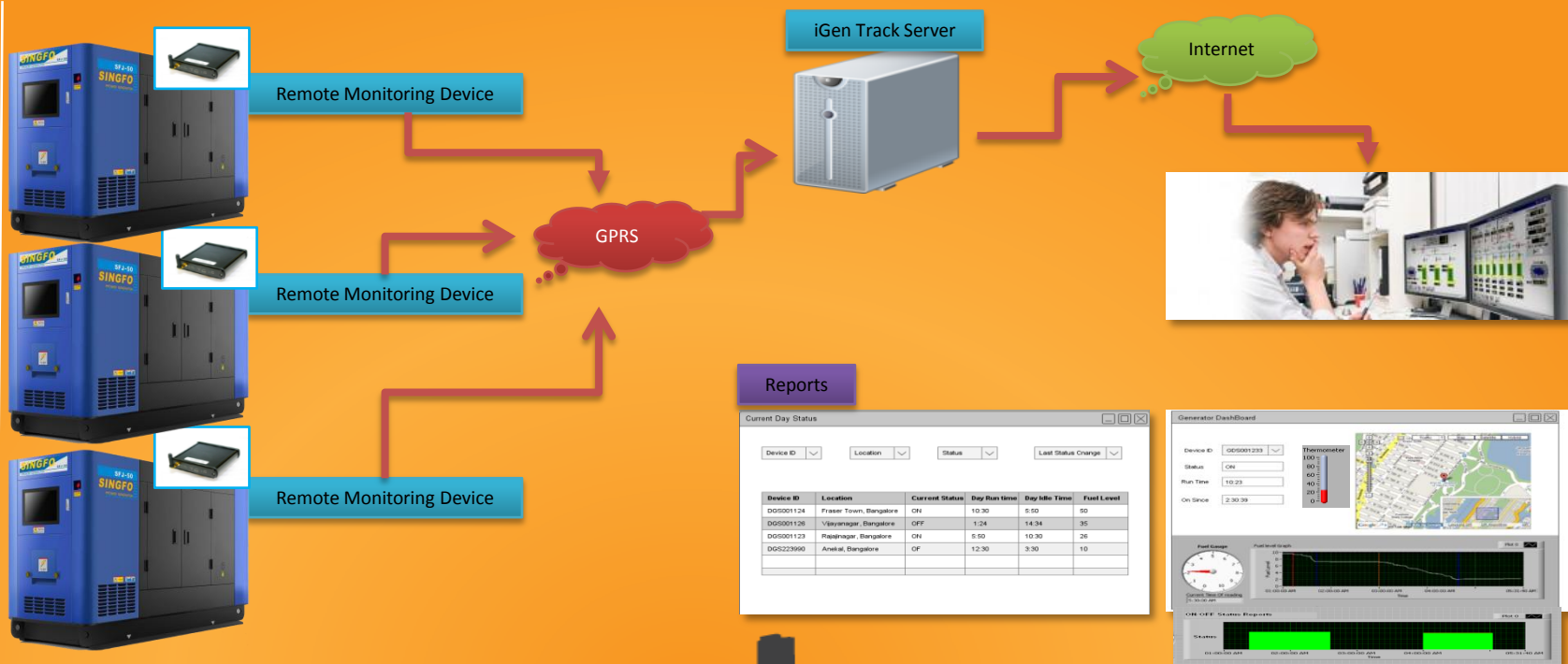
Through our innovative ideas, we always thrive to develop our next revolutionary product. We believe, nothing can inspire us like innovation. “Just as energy is the basis of life and ideas the source of innovation, so is innovation the vital spark of all human change, improvement and progress”.

Our innovative products and solutions have always played a major role in solving our clients’ specific problems. Our solutions are simple, cost effective, and developed by observing the end user needs. Our knowledge of multiplatform technologies, simple and proved methods and eagerness to develop the next big thing, has made us one of the competent companies capable of delivering state of the art cutting edge technology products.

“We are inspired to innovate”

A dark silhouette of a city skyline is positioned at the bottom of the slide, spanning the entire width. It features various building shapes of different heights and widths, creating a jagged horizon line against the orange background.

Remote Generator Monitoring



Remote Generator Monitoring



- ❖ The Solution provides a solution for remotely managing the generator in remote sites.
- ❖ The system acquires generator usage status, fuel level temperature and voltage periodically and sends it to a remote web server over GSM network for storage and processing.
- ❖ Web application provides many powerful MIS features.

MIS Reports

- ❖ ON /OFF status Report
- ❖ ON time and Off time report
- ❖ Fuel Level Report
- ❖ Current Status report
- ❖ Fuel added and theft Report
- ❖ Fuel graph, status graph
- ❖ Temperature and voltage reports

Email and SMS alerts

- ❖ Email/SMS on status change(ON->OFF, OFF->ON)
- ❖ Email/SMS on Low Fuel Level
- ❖ Email/SMS on generator over heating
- ❖ Email/SMS on fuel filling above threshold.

Company / Product Certification

ISO 9001:2008
Certified Company

ARAI[®]
Progress through Research
As per AIS004, Part 3:2009



aQuila

TRACK GPS-GSM-RFID Based System



S101

GPS + GSM/DATA RECORDING MODEL

AQUILA TRACK S101

Features:

- On/Off Tracking,
- Fuel Monitoring,
- Real Time Location of the Generator on Google map.
- Location and Fuel Level Query through SMS.
- All parameter configurations from web interface,
- Secondary Battery Backup up to 8 hours,
- **Domain Specific MIS Reports:** Daily report, Monthly report, On/Off Report, Indicative fuel report & pilferage controller (optional) , Generator On/Off report , and more.....

OBJECTIVES

In today's situation, where security and safety is of paramount importance, it is important to put adequate measures, checks and balances to avoid any kind of mishaps or occurrences which will put the company finance in danger.

PROPOSAL

In order to meet the aforementioned objective, we propose to install our GPS/GSM based Remote Data Acquisition System, The Commercial details of this arrangement are given in the Commercials section. Under this arrangement, the company will be able to monitor the fuel level in the generators, on/off condition of the Generators.



WORKING PROCESS

- Install GPS/GSM based aQuila Track Management System in the Generators.
- Monitor On/Off of the Generators.
- Monitor Fuel Level of Generators.
- Allot RFID based Cards to every site engineer . The engineer has to necessarily swap the card before he/she leaves the site (applicable only if RFID facility is opted for).

BENEFICIAL FACTORS

- Generator can be tracked on real time maps at any point of time.
- MIS Reports also could be generated for detailed On/Off records, Start Report, Fuel Report.
- Remote On/Off control.
- Remote attendance of Site Engineers.



Tech Spec

Parameters	Description
Processor	ARM7, 60 MHz, 30 MIPS 32 bit Controller
Memory	4MB solid state SPI Flash, 100K Erase and Program Cycle, 10 year data retention.
GSM Module	Dual Band GSM 900Mhz,DCS 1800Mhz GPRS: class10/class 8(Optional) & Coding Scheme CS1 to CS4. Quad band option available on request
GPS Module	GPS:66 acquisition-/ 22 tracking channels, Ultra high tracking/navigation sensitivity: -165dBm1,Inbuilt patch antenna, 5 Meters Accuracy
Communication Interface	TCP/IP on GPRS.
Ports	1-USB Device type, 2 Analog I/Oand 2 Digital I/O
SIM Interface	Supports SIM card: 1.8V & 3V
SMS	Supports Text
GPRS Packet Data	Class 10 ; Class 8 (Optional),Coding Scheme CS1 to CS4

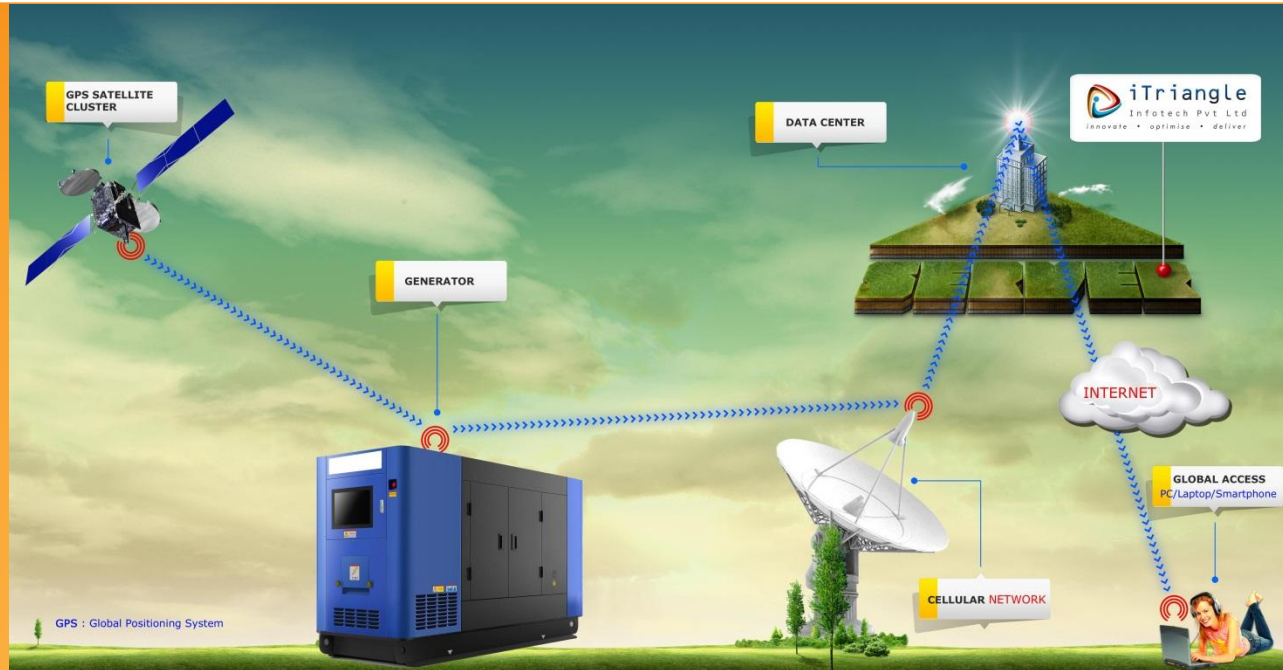
Tech Spec

Parameters	Description
LED Indication	Processing, GSM, GPS, USB Detection
Connectors	20 Pin SMD connector
	SIM Card Holder
Power Supply	Wide DC input voltage range (5V - 40V)
Internal Battery	Yes, 1500mah, 5 to 8 Hr backup
Enclosure	ABS Plastic Casing
Temperature	Operating: -10°C to +55°C
	Storage: -10°C to +85°C (Without Battery)
Dimension (mm x mm x mm)	106 L x 74 W x 30 H in mm
Weight	165 grams
Optional Features	RFID, AC Sensor, Door Open Sensor, Digital Outputs
Software	Website with tracking, report facilities

General Information & Product Description

**FEATURES MAY VARY DEPENDING ON THE MODEL AND THE
VARIANT**

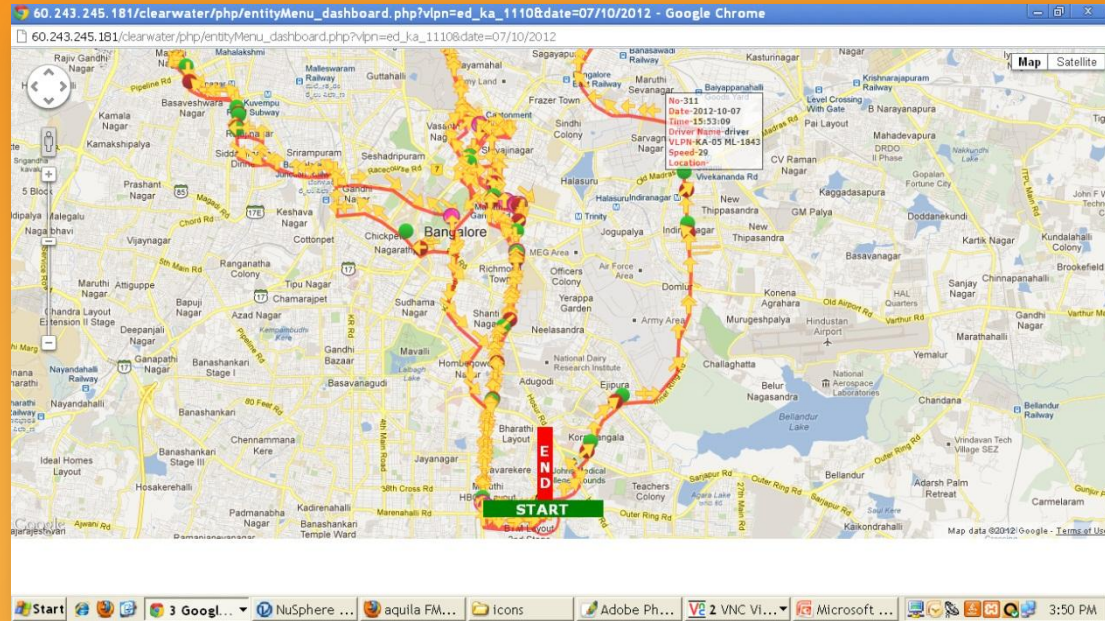
System Architecture



PRODUCT BRIEFING

- GPS tracking solutions for various market segments like Generator Monitoring, goods distribution, asset tracking , ATM Securitizing etc.
- GPS tracking products are ranging from passive offline trackers to active trackers with GSM/GPRS or satellite communication under the range of products called **AQUILA TRACK** .
- The technology enables accurate location (5 to 10 mtrs accuracy) of Generators.

GEO LOCATION ON MAP



GENERATOR ON/OFF REPORT

Predator FMS - Mozilla Firefox

localhost/fms_tracking.php/AdminHomePage.php

Engine Status Report

Ram123 KA-17 RC-5796 Start Date: 8/8/2012 End Date: 9/8/2012 view

Report Excel

Date	Engine On Time	Engine Off Time	Status/Duration(hr:min)
2012-08-08	00:17:45	02:05:45	01:48
2012-08-08	02:25:45	04:33:45	02:08
2012-08-08	05:12:45	05:51:45	00:39
2012-08-08	06:11:45	06:50:45	00:39
2012-08-08	08:23:45	08:25:45	00:02
2012-08-08	09:01:45	09:04:45	00:03
2012-08-08	11:35:49	11:45:49	00:10
2012-08-08	12:12:49	12:13:49	00:01
2012-08-08	12:59:49	13:00:49	00:01
2012-08-08	13:58:49	14:03:49	00:05
2012-08-08	14:24:49	14:26:49	00:02
2012-08-08	14:31:49	14:34:49	00:03
2012-08-09	00:42:49	01:12:49	00:30
2012-08-09	05:37:49	06:26:49	00:49
2012-08-09	11:31:49	11:51:49	00:20
2012-08-09	12:20:49	12:30:49	00:10
2012-08-09	12:50:49	13:00:49	00:10
2012-08-09	13:19:49	13:59:49	00:40
2012-08-09	14:38:49	15:57:49	01:19

On/Off TIME

60.243.245.16 x www.aquila... aquila FMS aquila FMS Dashboard aquila FMS aquila FMS Co-ordinate ch

← → www.aquila**track.com** Network+ T hN... Imported From Fi... Bookmarks Toolb... Save Page as PDF Free Web-to-PD... How do I fully re... Prefix 04044 | T... lctest.msgmantra...

This page is in Malay Would you like to translate it? Translate Nope Never translate Malay Options

Stop & Halt Report

Select Vehicle KA-02 AB-3638 Start Date: 8/10/2012 End Date: 09/10/2012 view

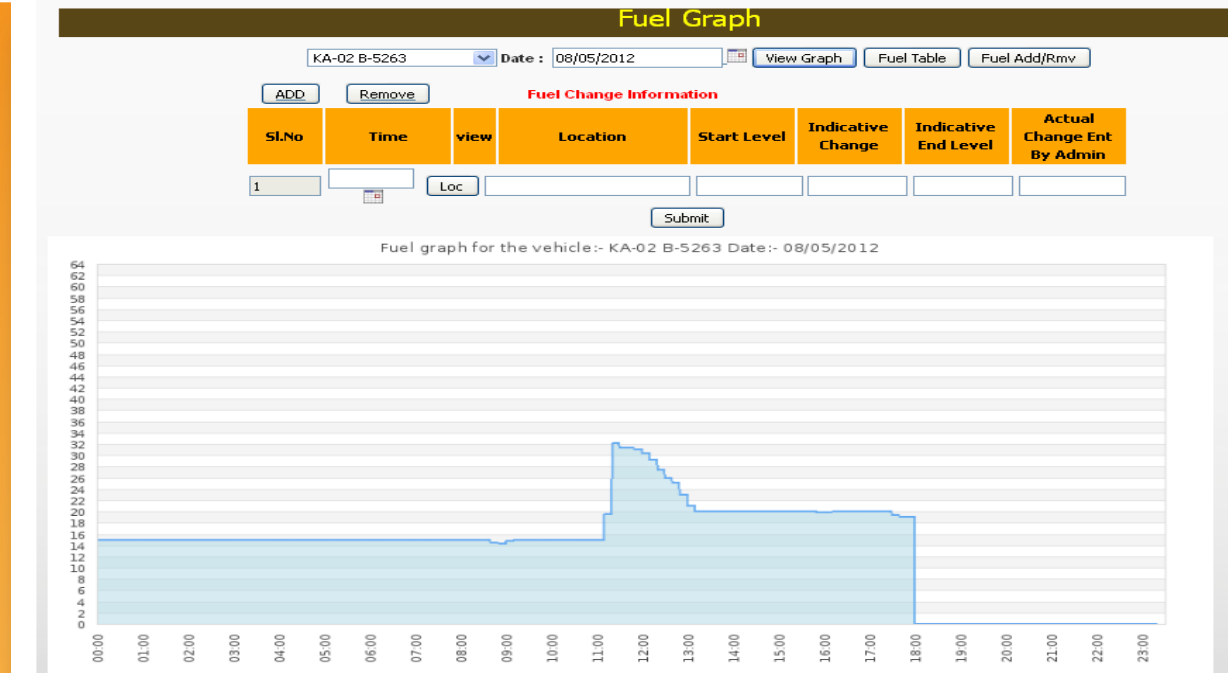
Report Excel

Date	From Time	Location	To Time	Status/Duration(hr:min)
2012-10-08	00:08:06	State Highway 91, Kudige, Karnataka, India	10:51:06	Halt Duration:- 10:43
2012-10-08	11:04:06	Mysore-Madikeri Rd, Karnataka, India	12:07:06	Halt Duration:- 01:03
2012-10-08	12:23:06	Mysore-Madikeri Rd, Karnataka, India	14:38:14	Halt Duration:- 02:15
2012-10-08	15:29:18	Mysore-Madikeri Rd, Hunsur, Karnataka, India	15:39:22	Halt Duration:- 00:10
2012-10-08	16:32:22	State Highway 17, Mysore, Karnataka, India	16:34:22	Stop Duration:- 00:02
2012-10-08	17:27:31	State Highway 17, Karnataka, India	17:49:31	Halt Duration:- 00:22
2012-10-08	17:55:31	State Highway 17, Karnataka, India	17:57:31	Stop Duration:- 00:02
2012-10-08	18:30:35	Besagarahalli Addarasthe, Karnataka, India	18:31:35	Stop Duration:- 00:01
2012-10-08	20:12:40	Ramanagar Main Rd, Magadi, Karnataka, India	20:16:40	Stop Duration:- 00:04
2012-10-08	20:19:40	Ramanagar Main Rd, Magadi, Karnataka, India	20:23:40	Stop Duration:- 00:04
2012-10-08	21:43:45	Link Rd, Palace Guttahalli, Bangalore, Karnataka, India	21:48:45	Halt Duration:- 00:05
2012-10-08	22:20:45	Hosur Main Rd, Sadduguntepalya, Adugodi, Bangalore, Karnataka 560029, India	22:25:45	Halt Duration:- 00:05
2012-10-08	23:13:50	2nd Main Rd, Ganesha Block, Nandini Layout, Bangalore, Karnataka, India	23:25:50	Halt Duration:- 00:12
2012-10-08	23:42:59	Magadi Rd, Anjana Nagar, Sunkadakatte, Bangalore, Karnataka, India	23:55:04	Halt Duration:- 00:13
2012-10-09	00:05:04	Magadi Rd, Anjana Nagar, Sunkadakatte, Bangalore, Karnataka, India	15:49:48	Halt Duration:- 15:44

Daily_Routewise_...xsls images1.jpg Show all downloads...

Start 3 Google... NuSphere ... aquila FM... icons Adobe Ph... V2 VNC Vi... Microsoft ... 4:02 PM

FUEL GRAPH/REPORT- FUEL FILLING (optional with extra cost)



FUEL REMOVAL



FUEL REPORT

Monthly Fuel Reports

KA-43 4052

Fuel Report

April

2012

View

Excel Report

Date	Time	Location	Indicative Beginning Level (In Ltrs)	Indicative End Level (In Ltrs)	Indicative Change Level (In Ltrs)	Actual Change Level (In Ltrs)	Driver
1/4/2012		No Fuel Information					
2/4/2012		No Fuel Information					
3/4/2012	07:20:00	10th Main Rd, 2nd Block, Jayanagar, Bangalore, Karnataka, India	38	70	32	35	Ganesh
Indicative Fuel Added: 32 Actual Fuel Added: 35 Indicative Fuel Removed: 0 Actual Fuel Removed: 0							
4/4/2012		No Fuel Information					
5/4/2012	06:45:00	Kanakapura Rd, Yediyur, Banashankari, Bangalore, Karnataka, India	44	74	30	35	Ganesh
Indicative Fuel Added: 30 Actual Fuel Added: 35 Indicative Fuel Removed: 0 Actual Fuel Removed: 0							
6/4/2012		No Fuel Information					
7/4/2012		No Fuel Information					
8/4/2012		No Fuel Information					
9/4/2012		No Fuel Information					
10/4/2012	07:20:00	Marigowda Rd, Mavalli, Bangalore, Karnataka, India	72	78	50	50	Ganesh
Indicative Fuel Added: 50 Actual Fuel Added: 50 Indicative Fuel Removed: 0 Actual Fuel Removed: 0							
11/4/2012		No Fuel Information					
12/4/2012		No Fuel Information					
13/4/2012		No Fuel Information					
14/4/2012		No Fuel Information					
15/4/2012		No Fuel Information					
16/4/2012		No Fuel Information					
17/4/2012		No Fuel Information					
18/4/2012		No Fuel Information					
19/4/2012	07:35:00	Rashtriya Vidyalaya Rd, 2nd Block, Jayanagar, Bangalore, Karnataka, India	27	84	57	60	Ganesh

Engine Run hours based on Ignition on/off

Engine Running Time Report

VLPN KA-43 405 **Start Date/Time** 16-May-2012 04:33:01 PM **End Date/Time** 16-May-2012 08:33:01 PM

Status	Start Time	End Time	Duration
OFF	04:35 PM	05:32 PM	00:57 Min
ON	05:32 PM	06:02 PM	00:30 Min
OFF	06:02 PM	06:58 PM	00:56 Min
ON	06:58 PM	07:20 PM	00:22 Min
OFF	07:22 PM	08:01 PM	00:39 Min
ON	08:03 PM	08:28 PM	00:25 Min

Total OFF Time : 2 hrs 32 min **Total ON Time** : 1 hrs 17 min

WARRANTY

- The device shall be maintained and serviced under standard warranty conditions for the first year and shall be covered under a paid service for the preceding years. AMC option is also available at a cost of Rs.1050/- per vehicle, after the warranty period, under standard AMC terms and Conditions.
- Any type of physical damage, sabotage or damage due to water log etc (induced defects) shall not be considered under warranty, and customer shall bear the cost of the device and servicing.
- The warranty period for RFID reader & Panic Button would be six months.



Schools & Educational Institutions

- ❖ VDRIT, Haliyal.
- ❖ Cambridge Primary School, Ligasugur, Raichur.
- ❖ R T Nagar School, Bangalore.
- ❖ Malgudi Vidya Niketan, Bangalore.
- ❖ Gnyanodaya Public School, Mysore.
- ❖ SLU School, Bangalore.
- ❖ CN National Public School, Bangalore.
- ❖ East Point, Bangalore.
- ❖ Purna Pramathi School, Bangalore
- ❖ Euro kids, Davangere.
- ❖ Smart School. Bangalore.
- ❖ Vidya Kendra. Bangalore.

Govt. & Public Sector

- ❖ Bhubaneswar City Transport. Bhubaneswar,
- ❖ Central Coalfields Limited, Piparwar, Ranchi.
- ❖ Ordnance Factory, Ministry of Defence, Chanda.
- ❖ Ordnance Factory, Bhandara.
- ❖ 2rajrifles, MEG Bangalore.
- ❖ Dept. of Commercial Taxes, Karnataka.
- ❖ Dept. of Horticulture, Karnataka.
- ❖ Krishna Jala Bhagya Nigam Ltd.
- ❖ Municipal Corporation, Chintamani.
- ❖ Krushi Vigyanan Kendra, University of Agricultural Sciences, Bangalore.
- ❖ City Municipal Corporation, Chikkaballapur.
- ❖ Canara Bank..
- ❖ Air Force Station, Yelahanka.
- ❖ TMC . Bannur
- ❖ Mysore Minerals Ltd. Bangalore.
- ❖ Gadag-Betageri City Municipal Council., Karnataka.

Our Major Clients & Projects

Corporates & Others

- ❖ Radiant Distributors, Bangalore.
- ❖ Goyal Sales Corporation, Hubli.
- ❖ Sonim Technologies, Bangalore.
- ❖ Mobily Infotech India Pvt. Ltd., Bangalore.
- ❖ Anuvarth Apparels, Bangalore.
- ❖ Medi wings Bioscience Pvt Ltd, Bangalore.
- ❖ Manpasand Manpower Pvt Ltd, Bangalore.
- ❖ Handa Transport, Hubli.
- ❖ Unitex Apparels Pvt Ltd, Bangalore.
- ❖ Gia Corp Care, Bangalore.
- ❖ Nearn IT, Hubli.
- ❖ Udupi Tours & Travels, Bangalore.
- ❖ Go Go International Pvt Ltd, Bangalore.
- ❖ Sun Multitek Enterprises, Bangalore.
- ❖ Nav Bharat Crane Service Pune.
- ❖ Unity Travels Bangalore. Sys Cabs Bangalore.
- ❖ Inter trans service (ind)pvt.
- ❖ K.Rajkamal Bangalore.
- ❖ G.S. Break Down Ahmadabad.
- ❖ Nandi Infrastructure Corridor Enterprises Pvt Ltd, Bangalore.
- ❖ Power Tech Call Centre LLP, Bangalore.
- ❖ Sys Cabs, Bangalore.
- ❖ United Associate Engineers, Bangalore.
- ❖ Creative Info Services, Bangalore.
- ❖ GW. Precision Tools Ltd. Bangalore.
- ❖ Nisarga Leisure & Travels Pvt. Ltd., Bangalore.
- ❖ Miles on Wheels, Bangalore.
- ❖ **Ola Cabs..**

- ❖ Municipal Corporation, Chintamani.
- ❖ Wind World (India) Ltd., Bangalore.
- ❖ Trawllday Tours & Travels Bangalore.
- ❖ Rescue 24/7 Tow Services.
- ❖ Manjushree Car Rentals, Bangalore.
- ❖ Zen Power Technologies , Bangalore.
- ❖ Ayoni Technologies LLP Bangalore.
- ❖ Charoen Pokphand Seeds Pvt Ltd, Bangalore.
- ❖ Navanit Motors
- ❖ Express Cargo.
- ❖ Inter trans service (India) Pvt Ltd.
- ❖ Maruthi Cement and Steels Pvt Ltd., Bangalore

OEM/System Integrators

- ❖ Escorts Ltd. Faridabad
- ❖ MIBS, Bangalore.
- ❖ Ethic Soft, Bangalore
- ❖ B Tree Technologies, Chennai
- ❖ Bayonet, Kenya.
- ❖ Argus Technologies LLP, UAE.
- ❖ Asset Telematics, Hyderabad
- ❖ Colosseum Tech Solutions Pvt Ltd, Hyderabad
- ❖ Rolta India Ltd., Mumbai.
- ❖ Tata Consultancy Services Ltd
- ❖ Himu Softech, Bangalore
- ❖ Kanoe Software Pvt. Ltd
- ❖ Infotrack Telematics, Bangalore
- ❖ 3rd Eye Solutions. Cochin
- ❖ Pulsar Electronics, Mumbai.
- ❖ **AC Tech Pvt. Ltd. Ahmedabad (Deployed IOCL)**
- ❖ YuvaTech. Mumbai.
- ❖ Aftech Ltd. Pune.

THANK YOU
AND WE LOOK FORWARD
TO SERVE YOU

